

IT-services by GFS

GFS is a **partner** for local authorities, institutions, planners, real estate companies and project developers.

We provide a **full service** for your **internet based geographic information service** (WebGIS). Just provide us with copies of your geographic data and, using our exmap® technology, we will present professionally on the internet.

Together with you we will contribute to the implementation of a standardised geographic data infrastructure for Europe – the **INSPIRE strategy**.

Implementing the exmap®-technology

The exmap®-technology consists of an **integrated software system** for the processing of geographic data and for its presentation on the web.

exmap® was entirely and **exclusively developed** by GFS. Since 2003, we have tested, optimised and continually expanded this technology in the internet using actual reference object from different scopes.

The exmap®-Web Mapping Framework **supports the OGC standards** for WMS, WFS and SFS services.

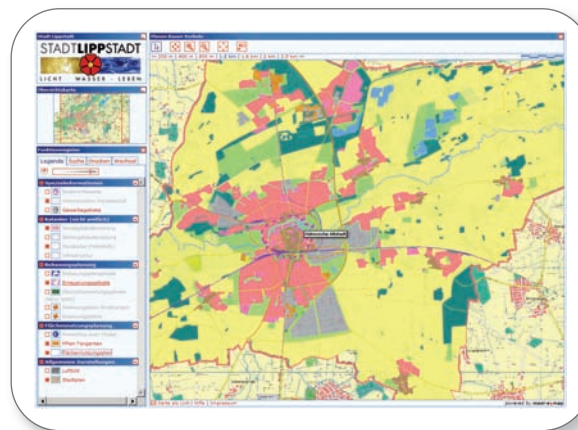
The exmap®-WebGIS options

- a state-of-the-art, **public information service** to enrich your internet presence
- and /or
- an efficient, internal information system for experts and specialists working remotely.

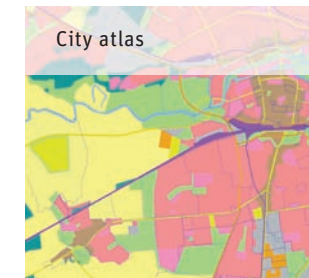
The advantages of exmap® providing

- ▶ separation of your (intranet based) GIS from the WebGIS; also as a complement to existing web solutions
- ▶ no training or staff costs; database access for your specialists can be implemented
- ▶ no acquisition costs for hardware, software, geo-database and exmap®-Framework
- ▶ reasonable monthly fee for the GFS full-service; volume based or flat-rate

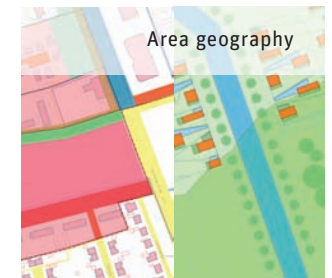
exmap® extended web map service



Innovation made in Germany



City atlas

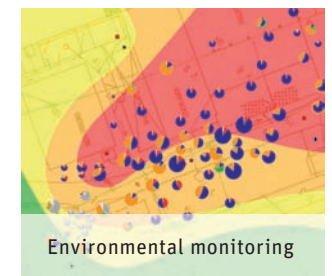


Area geography

exmap® scopes



Real estate planning



Environmental monitoring



Lindenstraße 98a
48282 Emsdetten
+49 2572 954150
www.gfs-mbh.com

complex **geo-informationen**

+

competent **GFS service**

=

optimal **Internet presentation**

Primary data – basis geo data

Land registry

EDBS-, ALKIS-, SCS1 formats



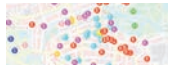
Vector based maps

Shape- and CAD-Files



Hot spots

Coordinate tables



Aerial photographs

TIF, PNG and GIF files



Raster maps

Prints / scans as PNG / JPG files



WMS import Layer

WMS-URLs



Secondary data – Geo reference data

Descriptions

PDF files



Tables

Excel, Access

ES0	Chenal (25)	83.000
ES1	250,000 CSM Homogenisiert	30.000
ES2	Control	1
ES3	Isolan (24), gelbst	136
ES4	Isolan (25)	3000
ES5	Leitfähigkeits, elektr. bei 25°C	919,09
ES6	Messstation	1
ES7	Natural (24/25)	14.000

Diagrams

JPG und TIF files



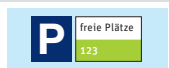
Videos, photographs

MOV and JPG files



Ongoing measurements

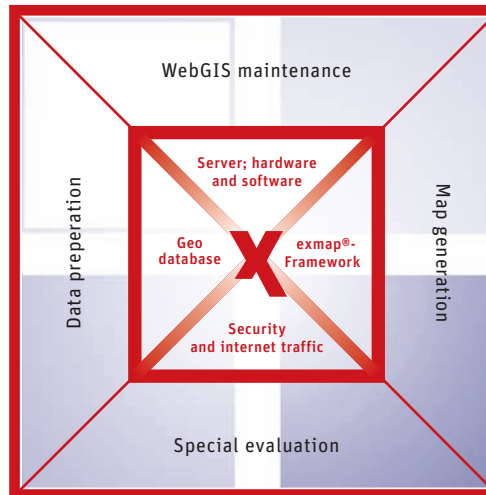
FTP storage



Info and linking

Text files

Urbiet:	Sonnenschein
Auskunft:	Herr Meier
Tel.:	01234/5678
Info:	>> Internetseite



exmap® WebGIS-Providing

Standard viewer

quick orientation within the reduced function frame window

go-exmap
Google Maps based Viewer

fix-exmap
barrier-free Viewer

Expert viewer

complete functionality
sensitivity and transparency on full screen

optimal-exmap

automatically selects a suitable viewer

mini-exmap
for older browsers, also without JavaScript

midi-exmap
for all modern browsers

maxi-exmap
for MS-IE browsers with SVG plug-in

Map service

More information due to map overlays

Google Earth™
powered by exmap®

National geo information
powered by exmap®